



IMPORTANT



INSTALLATION INSTRUCTIONS ROCKET CROSSBARS

NOTE: Failing to follow these instructions could lead to your crossbars coming apart unexpectedly!

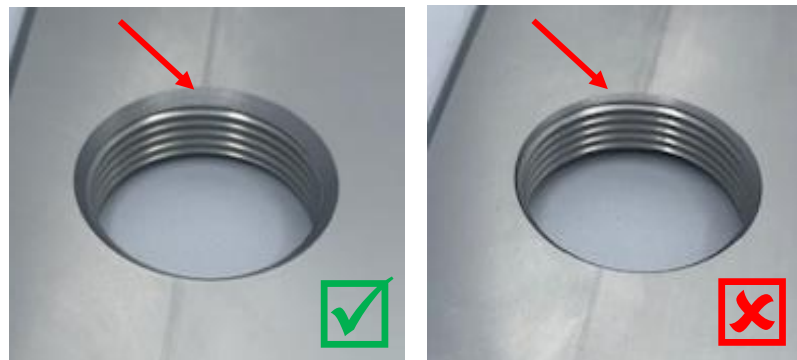
Tools Required: Provided Threadlocker Compound (**Loctite 271**)

Instructions:

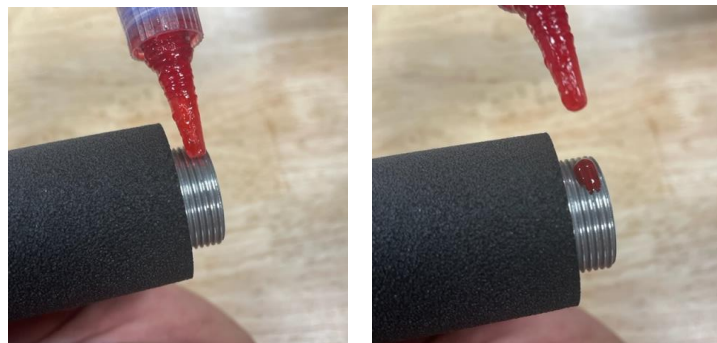
1. Set aside one (1) male crossbar, one (1) female crossbar, and two (2) crossbar endplates, ensuring all parts and surfaces are **clean and dry**.



2. The threaded holes on the crossbar endplates have different size bevels/chamfers on the front and back. Place the crossbar endplates on a work surface with the **larger** bevel facing **up**.



3. Add two (2) drops of the threadlocker compound near the end of the thread on the male crossbar.





4. Thread the male crossbar into the endplate with the larger bevel meeting the crossbar first. Securely tighten by **hand**.



5. Add two (2) drops of threadlocker compound near the end of the thread on the female crossbar. (like Step 3)
6. Thread the female crossbar into the second endplate and securely tighten by hand. (like Step 4)
7. Repeat with all crossbars.



8. Let set for 24 hrs. before putting into service. Check installation by attempting to unscrew the crossbars **by hand**. Do not use a wrench as you risk damaging the crossbar or its foam grip