



User Instructions Manual

skyTECH Catch Block

SKY-CB-01

Skyline Ziplines Ltd.

admin@skylineziplines.ca
www.skylineziplines.ca

Revision History

Revision	Sections Affected	Changes	Date
0	-	Original Publication	16 January 2018
1.0	5.1, 8,2, 4, 7.3, 1.3	Updated procedure in 5.1; added sections 1.3.2, 4.3, 4.4, 4.5, and 8.2; updated 7.3	16 September 2018
1.1	5.1, 4.1	Updated 5.1 to include Capture Plate, Added photos of Capture Plate	2 October 2018





Table of Contents

CONTENTS

REVISION HISTORY	2
TABLE OF CONTENTS	3
WARNINGS AND IMPORTANT NOTICES	5
1.0 DESCRIPTION	6
1.1 Applications	6
1.2 Standards	6
1.3 Description of skyTECH Catch Block	6
2.0 LIMITATIONS	7
2.1 Capacity and Working Load Limit	7
2.2 Environmental Hazards	7
2.3 Sharp Edges	7
2.4 Training	7
3.0 SYSTEM REQUIREMENTS	8
3.1 Compatibility of Components	8
3.2 Compatibility of Connectors	8
3.3 Making Connections	8
4.0 NOMENCLATURE AND ASSEMBLY	9
4.1 Description of Parts	9
4.2 Procedure for Assembling Catch Block	11
4.3 Procedure for Attaching Catch Block to zipSTOP	12
4.4 Procedure for Attaching Catch Block to Spring Bank	12
4.5 Procedure for Setting Up Capture System with Capture Plate	12
5.0 STANDARD OPERATING PROCEDURES	13
5.1 Standard Procedures for Operations – Removal of Trolley From Zipline	13
6.0 TRAINING	14
7.0 INSPECTION	15
7.1 Frequency	15
7.2 Daily Pre-Use Inspection Process	15
7.3 Volume Inspection Process	15
7.4 Documentation Process	16
7.5 Lock Out, Tag Out	16
8.0 MAINTENANCE AND STORAGE	17
8.1 Storage	17
8.2 Replacement Parts and Repairs	17
8.3 Catch Block Maintenance – Switch Position of or Change Out Inserts (SKY-CB-S11)	17
8.4 Catch Block Maintenance – Replacing Upper Aluminum Spacer [Gooseneck] (SKY-CB-S07)	17



8.5	Catch Block Maintenance – Replacing Bungee (SKY-CB-S09)	18
8.6	Catch Block Maintenance – Replacing Bumpers (SKY-CB-S05)	18
9.0	LIFETIME	19
10.0	INCIDENT AND FAILURE REPORTING	19
11.0	WARRANTY	20
	APPENDIX A – INSPECTION FORM	21
	APPENDIX B – MAINTENANCE LOG	24
	APPENDIX C – DOCUMENTATION PROCESS FLOWCHART	26
	APPENDIX D – INSERT GO-NOGO	27



Warnings and Important Notices

You will find on this page, and throughout this user instructions manual, many warnings and important notices that must be considered seriously when operating this system. It is imperative to understand the meaning of the warnings and potential hazards.



It is the responsibility of the operator to document and maintain a product use, inspection and maintenance logbook. Skyline Ziplines supplies inspection criteria and guidelines, forms and log sheets specific to all manufactured systems and equipment. It is the responsibility of the operator to follow all guidelines, intervals, and criteria set forth by these documents.



WARNING: This product is designed for zip line operations only. The operator(s) must read and understand the instructions in this manual before using this product. Manufacturer's instructions must be followed for the proper use and maintenance of the system and provided equipment. Alterations or misuse of this equipment, or failure to follow instructions, may result in serious injury or death.



This document does not replace a complete training necessary for the use of this product. Knowledge by the user of all appropriate techniques and risks is required.



This manual contains information and instructions specific to the skyTECH Catch Block and associated equipment manufactured by Skyline Ziplines Ltd. Make sure this User Instructions Manual is the latest version available. Contact Skyline Ziplines to obtain the latest document revisions, important Updates and other notices.



Products and systems manufactured by Skyline Ziplines are intended for use by professionals trained and experienced in the use, inspection, and maintenance of these products, or for use by persons under the direct visual surveillance of competent and responsible persons.



Before using this equipment, record the product identification information from the ID label in the inspection and maintenance log at the end of this document. Make sure this User Instructions Manual is readily available with the product. Contact Skyline Ziplines Ltd to obtain additional copies of this manual.

1.0 Description

1.1 Applications

Skyline Catch Blocks are to be used as braking safety equipment for zipline amusement rides only

1.2 Standards

Refer to local, provincial/state and federal laws and regulations pertaining to the installation and use of this type of equipment

1.3 Description of skyTECH Catch Block

1.3.1 skyTECH Catch Block

Product Codes:

- 1/2" Cable: SKY-CB-01-A1
- 5/8" Cable: SKY-CB-01-A2
- 3/4" Cable: SKY-CB-01-A3
- 7/8" Cable: SKY-CB-01-A4

Specifications:

- Designed for use with skyTECH Rocket and Jet Trolleys
- Compatible with Spring and zipSTOP Brake Systems
- CNC Machined Aluminum and UHMW Body
- Stainless Steel Hardware
- Replaceable Rubber Bumpers
- Removable Catch Teeth
- Composite Inserts, Eliminate Metal-to-Metal Contact

1.3.2 skyTECH Capture Plate

Product Code: SKY-CB-02

Specifications:

- Designed for use with skyTECH Catch Block
- Compatible with Spring and zipSTOP Brake Systems
- CNC Machined Aluminum and UHMW Body
- Stainless Steel Hardware
- Replaceable Rubber Bumpers
- Removable Catch Teeth
- Composite Inserts, Eliminate Metal-to-Metal Contact

2.0 Limitations

Consider the following application limitations before using this equipment:

2.1 Capacity and Working Load Limit

- Not to be used in operations exceeding 60 mph braking speeds
- Not to be used in operations exceeding 300 lbs. patron weight

2.2 Environmental Hazards

Use of this equipment in areas with environmental hazards may require additional precautions to prevent injury to the user or damage to the equipment. Hazards may include, but are not limited to: heat, chemicals, corrosive environments, electrical fields and wires, gases and sharp edges.

2.3 Sharp Edges

Avoid using where the zip line equipment or other system components will be in contact with, or abrade against unprotected sharp edges

2.4 Training

Skyline Catch Block must only be installed and used by persons trained in their correct application and use (See Section 5)



3.0 System Requirements

3.1 Compatibility of Components

Skyline equipment is designed for use with the Skyline approved components and subsystems only. Substitution or replacements made with non-approved components or subsystems may jeopardize compatibility of equipment and may affect the safety and reliability of the complete system.

Approved Brake Systems

- skyTECH Spring Brake System
- Head Rush Technologies zipSTOP
- Contact Skyline Ziplines for any questions regarding brake system compatibility

Approved Trolleys

- skyTECH Rocket Trolley
- skyTECH Jet Trolley
- Contact Skyline Ziplines for any questions regarding trolley compatibility

3.2 Compatibility of Connectors

Connectors are compatible with connecting elements when they have been designed to work together in such a way that their size and shape do not cause their gate mechanism to inadvertently open regardless of how they become oriented.

Connectors used to attach to the Skyline Catch Block should meet these specifications:

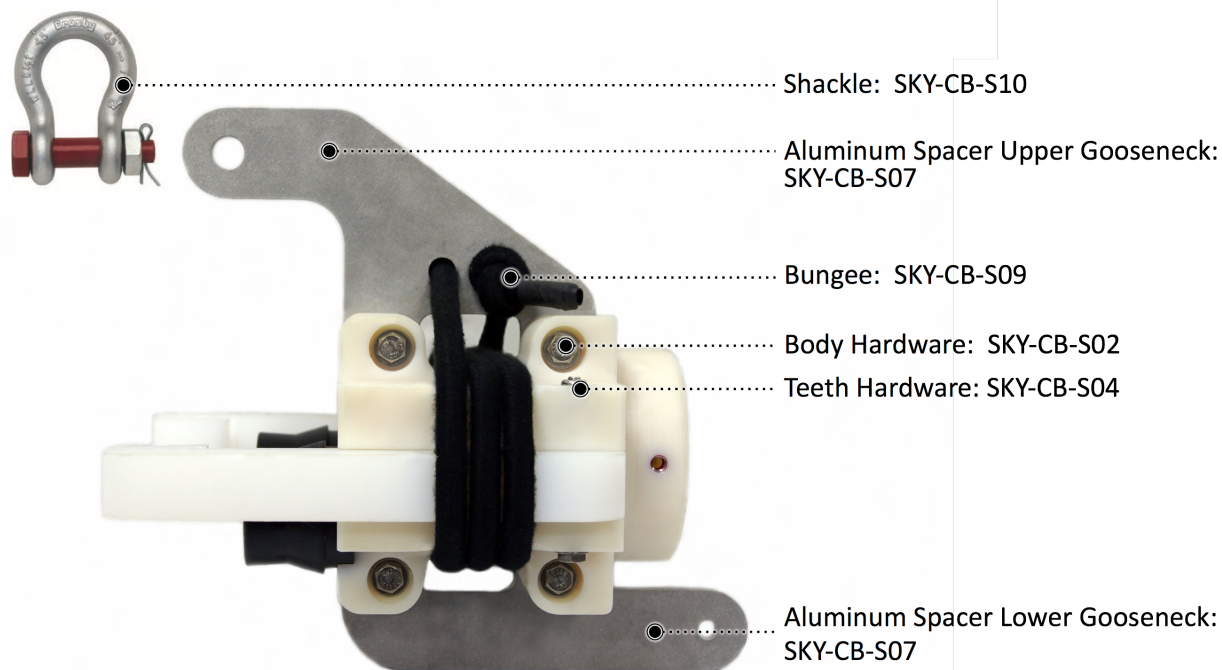
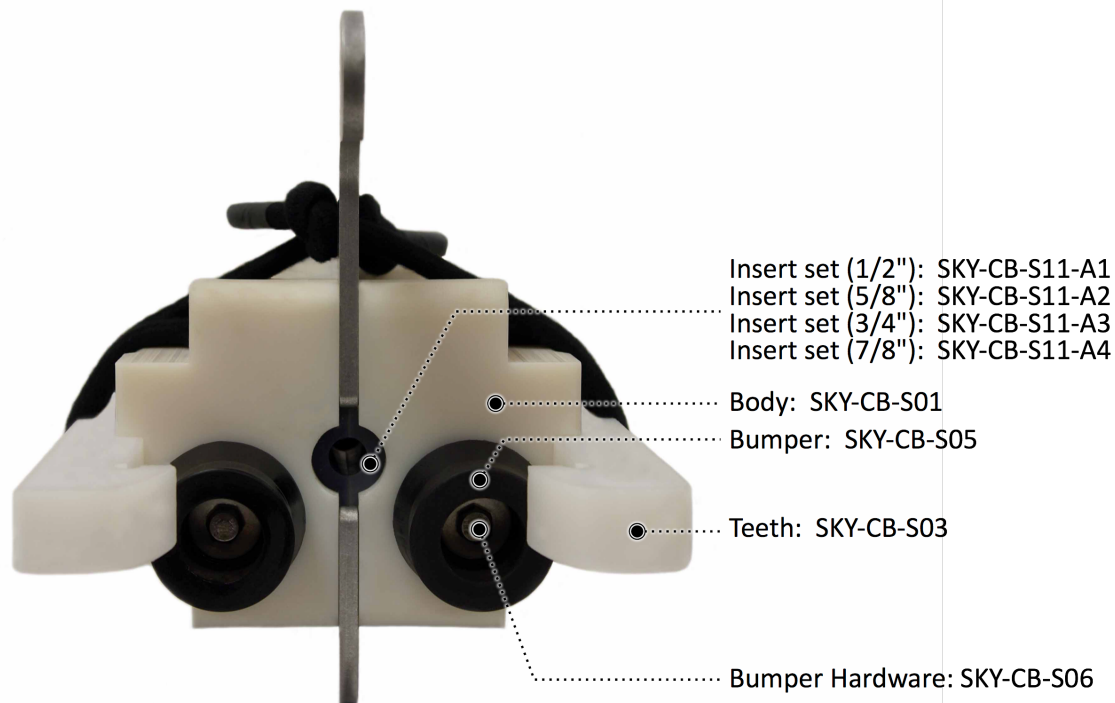
- Minimum break strength of 15 kN or 3,300 lbs
- Shape must be designed to attach to top Goose Neck with minimal hole slop (<1/8")
- Must have a mechanism for locking, i.e. cotter pin, spring pin, lock wire, etc.
- Must have WLL or MBS label on connector
- Recommended Connector(s): Crosby G-2130 7/16" Shackle

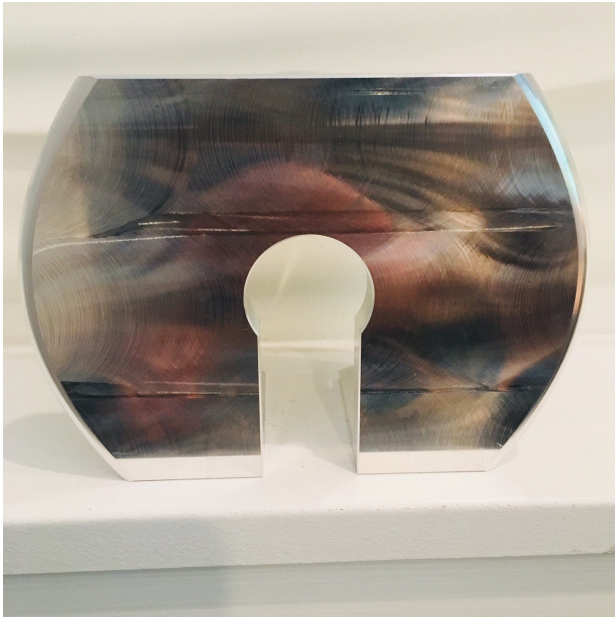
3.3 Making Connections

Use only connectors that are suitable to each application. Ensure all connectors are compatible in size, shape, and strength. Do not use equipment that is not compatible. Ensure all connectors are fully closed and locked.

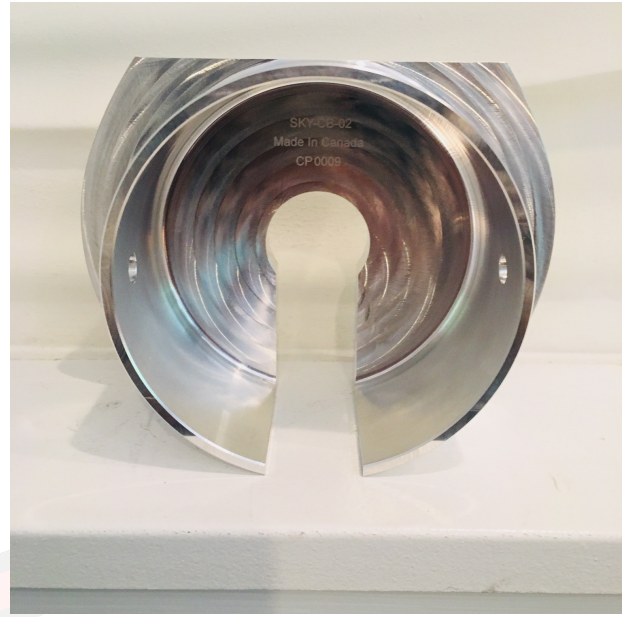
4.0 Nomenclature and Assembly

4.1 Description of Parts

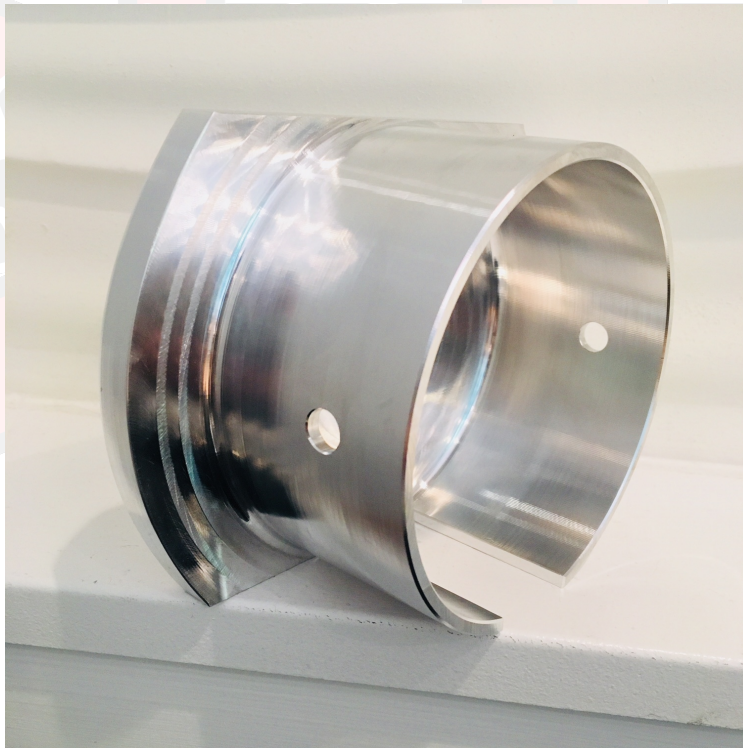




Front of Plate



Rear of Plate



Side View with Mounting Holes



4.2 Procedure for Assembling Catch Block

Tools Required: (2) 7/16" Sockets, (2) Socket Wrenches

*Skyline Ziplines recommends utilizing an anti-seize compound on all stainless-steel components

- 4.2.1 Install bumpers (SKY-CB-S05) with 1 bolt (SKY-CB-S06, 1-1/4") and 1 washer (1/4") per bumper on front of catch block
- 4.2.2 Install right and left teeth (SKY-CB-S03) with 1 bolt (SKY-CB-A04, 2-3/4"), 1 washer (1/4") on top, 1 washer (1/4") on bottom, and 1 nut (1/4") with nut on bottom
- 4.2.3 Install appropriate size inserts (SKY-CB-S11, to match cable diameter size) into catch block body, four total pieces
- 4.2.4 Arrange catch block body on cable with bumpers above cable and facing up the zipline
- 4.2.5 Temporarily insert 1 bolt (SKY-CB-S02, 4") into one of the top assembly holes, allowing for two handed installation
- 4.2.6 Insert Lower Aluminum Spacer [Gooseneck] (SKY-CB-S08) with hole facing away from the bumpers
- 4.2.7 Install 1 bolt (4"), 1 washer (1/4") on left, 1 washer (1/4") on right, and 1 nut (1/4"). Do not tighten
- 4.2.8 Repeat 4.2.7 for second bolt on bottom
- 4.2.9 Remove bolt inserted on top in step 4.2.5
- 4.2.10 Install Upper Aluminum Spacer [Gooseneck] (SKY-CB-S07) with hole facing towards bumpers
- 4.2.11 Install 1 bolt (4"), 1 washer (1/4") on left, 1 washer (1/4") on right, and 1 nut (1/4"). Do not tighten
- 4.2.12 Repeat 4.2.11 for second bolt on top
- 4.2.13 Equally tighten down all four body assembly bolts to eliminate all movement of aluminum spacers. Check that Catch Block moves smoothly over cable
- 4.2.14 Insert one end bungee (SKY-CB-S09) through one hole on upper aluminum spacer and tie a single overhand knot
- 4.2.15 Wrap bungee around Catch Block body three times making sure to pass over both teeth and through the large slot in the Lower Aluminum Spacer [Gooseneck]
- 4.2.16 Insert end of bungee through the second hole on Upper Aluminum Spacer [Gooseneck] and tie a single overhand knot
- 4.2.17 Check that Catch Block teeth open and close
- 4.2.18 Attach connector (see Section 3.2 For Connector Compatibility) and brake system
- 4.2.19 *If using at front of a spring bank, insert rear of Catch Block body into the first spring and install two bolts on the right and left to attach the spring to the Catch Block



4.3 Procedure for Attaching Catch Block to zipSTOP

Tools Required: Catch Block, Brake System, Redirect Rope, Thimble

- 4.3.1 Assemble Catch Block in accordance with section 4.2
- 4.3.2 Orient Catch Block with connector on top
- 4.3.3 Attach zipSTOP redirect rope to connector with follow-through figure-8 knot and thimble
- 4.3.4 Allow system to reset to rest, check that Catch Block is oriented correctly

4.4 Procedure for Attaching Catch Block to Spring Bank

Tools Required: (2) 7/16" Sockets, (2) Socket Wrenches

*Skyline Ziplines recommends utilizing an anti-seize compound on all stainless-steel components

- 4.4.1 Assemble Catch Block in accordance with section 4.2
- 4.4.2 Orient Catch Block with connector on top
- 4.4.3 Insert rear of Catch Block into front spring of skyTECH Spring Brake
- 4.4.4 Install 1 bolt (SKY-CB-S06, 1-1/4") into heli-coil insert of Catch Block
- 4.4.5 Repeat 4.4.4 for second bolt on opposite side of Catch Block

4.5 Procedure for Setting Up Capture System with Capture Plate

Tools Required: (2) 7/16" Sockets, (2) Socket Wrenches

*Skyline Ziplines recommends utilizing an anti-seize compound on all stainless-steel components

- 4.5.1 Assemble Catch Blocks in accordance with section 4.2
- 4.5.2 Attach Catch Blocks in accordance with sections 4.3 and 4.4 respectively
- 4.5.3 Place Capture Plate (SKY-CB-02) on rear of Catch Block attached to zipSTOP (section 4.3) with cable slot oriented down
- 4.5.4 Install 1 bolt (SKY-CB-S06, 1-1/4") into heli-coil insert of Catch Block
- 4.5.5 Repeat 4.5.4 for second bolt on opposite side of Catch Block

5.0 Standard Operating Procedures



The following operating procedures outline only the necessary steps required to complete each process. The procedures do not consider additional safety requirements and additional safety considerations that should be considered for each site. Please consult a qualified person and/or your site-specific manual to ensure all necessary steps are taken to guarantee safety in your operations.

5.1 Standard Procedures for Operations – Removal of Trolley From Zipline

**Both methods apply for also releasing a Catch Block (SKY-CB-01) from another Catch Block when outfitted with a Capture Plate (SKY-CB-02)

Disengage Teeth Method

- 5.1.1 Grab brake line under arm
- 5.1.2 Pull outwards on teeth of catch block
- 5.1.3 Slide trolley out from teeth
- 5.1.4 Remove trolley from cable
- 5.1.5 Release brake line from under arm for auto-reset

Trolley Rotation Method

- 5.1.6 Grab brake line under arm
- 5.1.7 Hold trolley body in one hand and the catch block in the other
- 5.1.8 Rotate trolley body 90 degrees
- 5.1.9 Slide trolley out from teeth
- 5.1.10 Remove trolley from cable
- 5.1.11 Release brake line from under arm for auto-reset

6.0 Training

It is the responsibility of the buyer/user of this equipment to make sure that they understand these instructions, and are sufficiently trained in the correct use and care of this equipment. The user must be aware of the operating characteristics, application limits, and the consequences of improper use. Training must be done prior to use and user must be evaluated for his/her competence to use this equipment. Gaining an adequate education in proper techniques and methods of safety is your own responsibility. Training should be done under the supervision of competent persons.

It is recommended that Skyline Ziplines perform a manufacturer's training to cover the material in this document, use with other equipment, and site specific training.

**Competent persons: (OSHA) One who is capable of identifying existing and predictable hazards in the surroundings or working conditions that are hazardous or dangerous to employees, and who has the authorization to take prompt corrective measures to eliminate them.*

7.0 Inspection

7.1 Frequency

- 7.1.1 The Skyline Catch Block must be formally inspected daily prior to initial use and recorded in the inspection log
- 7.1.2 The Catch Block must be informally inspected prior to each use for normal operation, orientation, and overall condition
- 7.1.3 Visual and NDT inspections are required based on volume
- 7.1.4 The Skyline Catch Block must be inspected by the manufacturer or approved competent person(s) at least once a year (or more frequently if deemed necessary by the frequency and/or conditions of use). The results of this formal inspection must be recorded in the inspection and maintenance log at the end of this manual

7.2 Daily Pre-Use Inspection Process

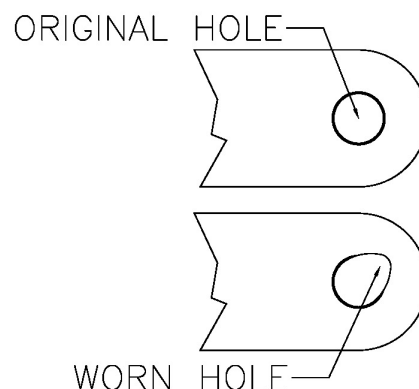
The daily pre-use inspection process is included in Appendix A. The forms available in this manual may be used for operations and as a template for site specific forms. It is critical that every item presented on the provided form is inspected and documented.

7.3 Volume Inspection Process

The volume inspection process and form are included in Appendix A. The volume inspection process for catch blocks occurs after 1,000 cycles per unit

Catch Block Retention Bracket (Goose Neck):

Using calipers, measure the connection hole and ensure that the material thickness tolerance meets or exceeds .45" for the entire circumference of the hole to outside edge



7.4 Documentation Process

Located in Appendix A is a sample Inspection form that Skyline Ziplines recommends using as a template. Located in Appendix B is a sample Maintenance form that Skyline Ziplines recommends using as a template. Located in Appendix C is a flowchart explaining the appropriate process for inspections, maintenance, and documentation. It is important to reference this flowchart for proper Quality Assurance documentation.

7.5 Lock Out, Tag Out

To ensure the highest standard of safety, it is required that all sites produce a Lock Out, Tag Out system. The system/process is designed to identify and prevent the use of all equipment identified through the inspection process as REJECTED (not suitable for use). Below is an example provided by Skyline Ziplines and is also included in the flowchart in Appendix C:

- 7.5.1 Item identified as rejected or failed during inspection by staff member
- 7.5.2 Failure/rejection is noted on inspection log
- 7.5.3 Item is marked with a tag with the following information:
 - 7.5.3.1 Name of staff member
 - 7.5.3.2 Date of inspection
 - 7.5.3.3 Reason for rejection
- 7.5.4 Item is placed in designated Lock Out, Tag Out area. This area must be removed from the operating area to avoid any chance of use.



8.0 Maintenance and Storage

8.1 Storage

Proper storage of equipment leads to longer equipment life and assurance of the integrity of the product. Follow the below guidelines for long term:

- Store the product in a cool, dry, and clean environment out of direct sunlight
- Avoid areas that vapors may exist
- Avoid stacking trolleys on top of each other and metal to metal contact
- Thoroughly inspect all equipment after extended storage

8.2 Replacement Parts and Repairs

All replacement parts must be purchased through Skyline Ziplines Ltd. All equipment repairs must be performed by the following: Skyline Ziplines Ltd, an authorized contractor/vendor of Skyline Ziplines Ltd with approval, or trained and authorized onsite personnel.

8.3 Catch Block Maintenance – Switch Position of or Change Out Inserts (SKY-CB-S11)

Tools Required: (2) 7/16" Sockets, (2) Socket Wrenches

- 8.3.1 Disassemble entire unit by performing assembly instructions in section 4.2 in reverse
- 8.3.2 Inspect inserts and replace as required in Section 7.2
- 8.3.3 Assemble entire unit by performing assembly instructions in section 4.2
- 8.3.4 Inspect unit and record maintenance in log (Appendix B)

8.4 Catch Block Maintenance – Replacing Upper Aluminum Spacer [Gooseneck] (SKY-CB-S07)

Tools Required: (2) 7/16" Sockets, (2) Socket Wrenches

- 8.4.1 Remove bungee, inspect in accordance with Section 7.2 Part C
- 8.4.2 Remove connector for brake system
- 8.4.3 Remove two top bolts (4") attaching Upper Aluminum Spacer [Gooseneck] to Catch Block
- 8.4.4 Remove Aluminum Spacer [Gooseneck], loosen lower bolts if necessary
- 8.4.5 Install new Upper Aluminum Spacer [Gooseneck] (SKY-CB-S07) with hole facing bumpers
- 8.4.6 Install 1 bolt (4"), 1 washer (1/4") on left, 1 washer (1/4") on right, and 1 nut (1/4"). Do not tighten
- 8.4.7 Repeat 8.3.6 for second bolt on top
- 8.4.8 Equally tighten down all four body assembly bolts to eliminate all movement of aluminum spacers. Check that Catch Block moves smoothly over cable
- 8.4.9 Insert one end bungee (SKY-CB-S09) through one hole of Upper Aluminum Spacer [Gooseneck] (SKY-CB-S07) and tie a single overhand knot
- 8.4.10 Wrap bungee around Catch Block body three times making sure to pass over both teeth and through the large slot in the Lower Aluminum Spacer [Gooseneck] (SKY-CB-S08)



- 8.4.11 Insert end of bungee through the second hole on Upper Aluminum Spacer [Gooseneck] and tie a single overhand knot
- 8.4.12 Check that Catch Block teeth open and close
- 8.4.13 Attach connector (see Section 3.2 For Connector Compatibility) and brake system
- 8.4.14 Inspect unit and record maintenance in log (Appendix B)

8.5 Catch Block Maintenance – Replacing Bungee (SKY-CB-S09)

Tools Required: None

- 8.5.1 Remove old bungee completely and inspect Catch Block unit
- 8.5.2 Insert one end bungee (SKY-CB-09) through one hole of Upper Aluminum Spacer [Gooseneck] (SKY-CB-S07) and tie a single overhand knot
- 8.5.3 Wrap bungee around Catch Block body three times making sure to pass over both teeth and through the large slot of the Lower Aluminum Spacer [Gooseneck] (SKY-CB-S08)
- 8.5.4 Insert end of bungee through the second hole of the Upper Aluminum Spacer [Gooseneck] and tie a single overhand knot
- 8.5.5 Check that Catch Block teeth open and close
- 8.5.6 Inspect unit and record maintenance in log (Appendix B)

8.6 Catch Block Maintenance – Replacing Bumpers (SKY-CB-S05)

Tools Required: 7/16" Socket, Socket Wrench

- 8.6.1 Remove the bolt and washer attaching bumper to Catch Block body using 7/16" socket
- 8.6.2 Repeat for opposite bumper if required
- 8.6.3 Inspect Catch Block body, bolt, and washer for damage
- 8.6.4 Install new bumper(s) with 1 bolt (1-1/4") and 1 washer (1/4") on front of catch block
- 8.6.5 Inspect unit and record maintenance in log (Appendix B)

9.0 Lifetime

The lifetime of a skyTECH Catch Block is determined through the NDT method described in Section 7.3. The actual lifetime depends on the intensity and the frequency of use as well as the environment. An exceptional circumstance might limit the product lifetime to a single use. A product that was not inspected at least once per year should be removed from service and replaced.

10.0 Incident and Failure Reporting

In the unfortunate situation that a Skyline Catch Block is involved in an incident or a failure, please notify Skyline Ziplines immediately so that prompt corrective measures can be taken by Skyline Ziplines. Product Safety Alerts are available at request and are sent out to all previous customers via email.

Complete information concerning the incident (date, location, details as to event and consequence, etc.) must be communicated to admin@skylineziplines.ca and/or called in to the office at 604-905-4149.

Skyline Ziplines will investigate the incident and if a product recall alert is required, shall notify all known customers and distributors who have purchased the product.



11.0 Warranty

Subject to the following limitations, terms, and conditions, Skyline Ziplines LTD warrants to the original purchaser of each Product that such Products when purchased new, are free of defects in materials and workmanship. This limited warranty may be exercised for a period of up to one year from the date of receipt. This limited warranty does not apply to normal wear and tear, nor to claimed defects, malfunctions or failures that result from abuse, neglect, improper assembly, improper maintenance, alteration, collision, crash, or misuse.

EXCEPT AS EXPRESSLY SET FORTH ABOVE, SKYLINE ZIPLINES LTD DISCLAIMS ALL OTHER WARRANTIES, EXPRESS OR IMPLIED, INCLUDING, WITHOUT LIMITATION, IMPLIED WARRANTIES OF MERCHANTABILITY AND FITNESS FOR A PURPOSE. SKYLINE ZIPLINES LTD'S RESPONSIBILITY FOR WARRANTY CLAIMS IS LIMITED TO, AT SKYLINE ZIPLINES LTD'S SOLE DISCRETION, REIMBURSEMENT OF THE ORIGINAL PURCHASE PRICE, REPAIR OF THE PRODUCT, OR REPLACEMENT OF THE PRODUCT WITH THE SAME OR SIMILAR PRODUCT. NOTWITHSTANDING anything in THESE TERMS to the contrary, SKYLINE ZIPLINES LTD SHALL NOT be responsible or held liable for punitive, indirect, incidental or consequential damages, including without limitation, liability for loss of use, loss of profits, loss of Product or business interruption however the same may be caused, including fault or negligence of SKYLINE ZIPLINES LTD.

To exercise rights under this limited warranty, Customer must return the affected Product to Skyline Ziplines LTD (unless otherwise instructed by Skyline Ziplines LTD) to:

SKYLINE ZIPLINES LTD
6-1006 LYNHAM ROAD
WHISTLER, BRITISH COLUMBIA, CANADA V0N 1B1

Skyline Ziplines LTD will use reasonable commercial efforts to return all product in a timely manner to the designated location and will be responsible for all shipping costs. Skyline Ziplines LTD reserves the right to modify this limited warranty at any time, in its sole discretion.

Appendix A – Inspection Form

*Sample files available upon request

This Page Is Intentionally Blank

INSPECTION FORM I-03

skyTECH Catch Block



Inspection Information

Frequency: Daily Pre-Use

Models: Catch Block SKY-CB-01

Performed By: Trained Staff Member

Manufacturer: Skyline Ziplines LTD.

Inspect all matching equipment in accordance with the inspect criteria listed below. At the bottom, record the equipment's disposition by marking the appropriate ID number. If the answer is YES to one or more of the following questions, the unit is deemed UNFIT for service.

1. Known Equipment History

- Has the unit received an impact exceeding 60 mph without a subsequent inspection?
- Has the unit been exposed to detrimental chemical products or an intensive source of heat?
- Has the unit been formally inspected within the last year by a competent person?

2. Preliminary Observations

- Are all tags and labels attached and legible?
- Has the product undergone modifications or alterations not performed or authorized by the manufacturer?

3. Body Inspection

- Are there any visual indications of damage to the body, teeth, or aluminum spacers such as chips, bends, cracks, or excessive wear?
- Are there any issues with the Bump Stops such as loose hardware or deformations?
- Are there any issues with the Catch Block running smoothly over the cable?

4. Wear Item Inspection

- Are the aluminum spacers touching the cable due to worn inserts?
- Are there any rope frays, loose ends, or irregularities with the knot for the redirect rope?
- Are there any issues with the teeth opening and closing freely? Is the bungee cord core visible at all?

5. Hardware Inspection

- Is there any loose or missing hardware?
- Is there any deformation, marks, cracks, wear, corrosion, rust, bent metal, or other issues with metallic components?

Disposition - Circle all Line number's correlating with all units that have PASSED the inspection and are FIT for service

01	02	03	04	05	06	07	08	09	10
----	----	----	----	----	----	----	----	----	----

Failed Equipment - List all ID numbers for units deemed UNFIT for service. Consult the manual for proper Lock Out, Tag Out Protocol

Notes/Comments

Inspected By:

Date:

INSPECTION FORM I-30

skyTECH Catch Block



Inspection Information

Frequency: 1,000 Cycles

Models: Catch Block SKY-CB-01

Performed By: Trained Staff Member

Manufacturer: Skyline Ziplines LTD.

Inspect all matching equipment in accordance with the inspect criteria listed below. At the bottom, record the equipment's disposition by marking the appropriate ID number. If the answer is YES to one or more of the following questions, the unit is deemed UNFIT for service.

1. Aluminum Spacer (Gooseneck) Inspection

- Using the Go-No Go Gauge, does the gauge fit through the brake line connection hole?
- Using calipers, is the material thickness surrounding the hole less than TK?

2. Wear Item Inspection

- Are the aluminum spacers touching the cable due to worn inserts?

Disposition - Circle all Line number's correlating with all units that have PASSED the inspection and are FIT for service

01	02	03	04	05	06	07	08	09	10
----	----	----	----	----	----	----	----	----	----

Failed Equipment - List all ID numbers for units deemed UNFIT for service. Consult the manual for proper Lock Out, Tag Out Protocol

Notes/Comments

Inspected By:

Date:

Appendix B – Maintenance Log

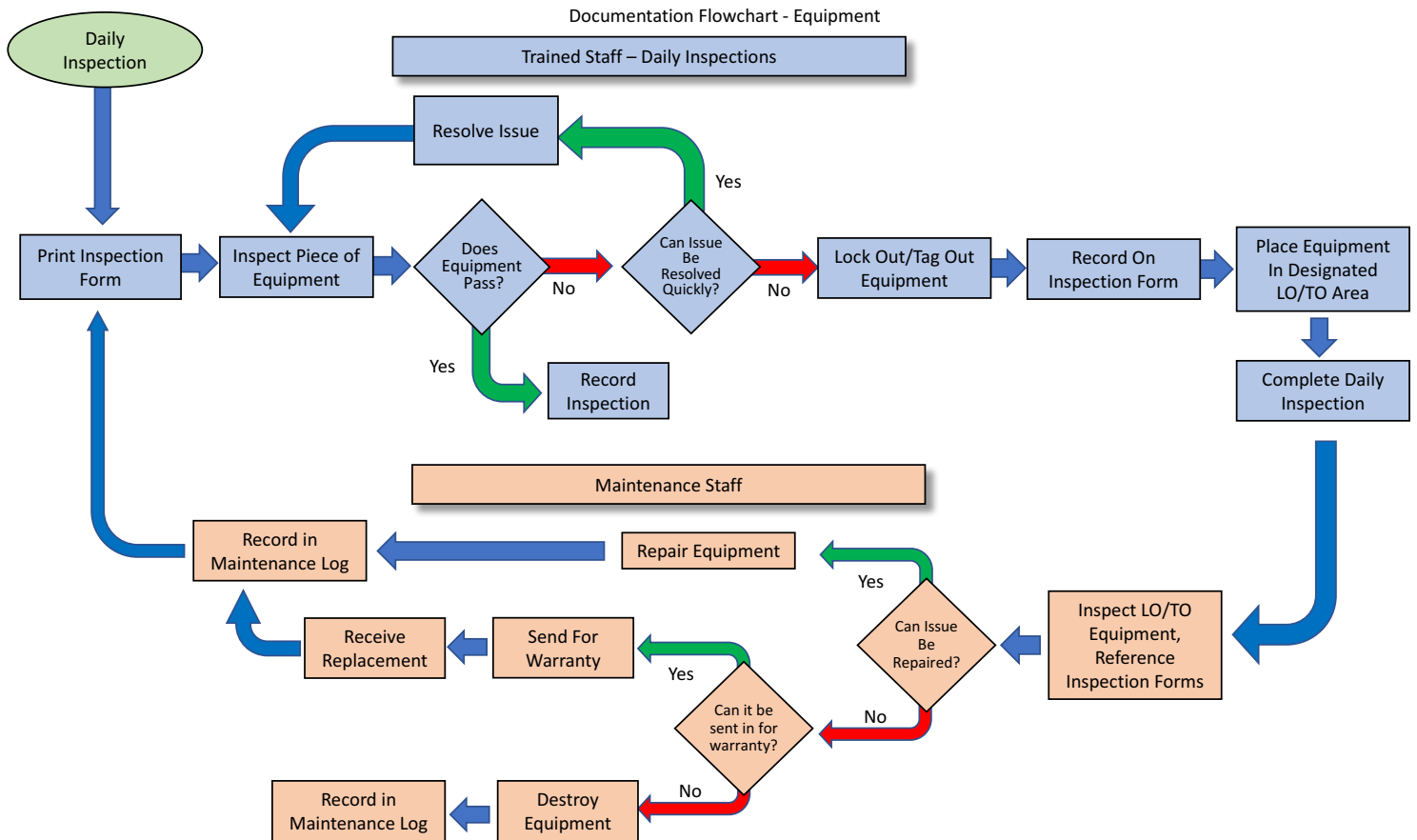
*Sample files available upon request

This Page Is Intentionally Blank

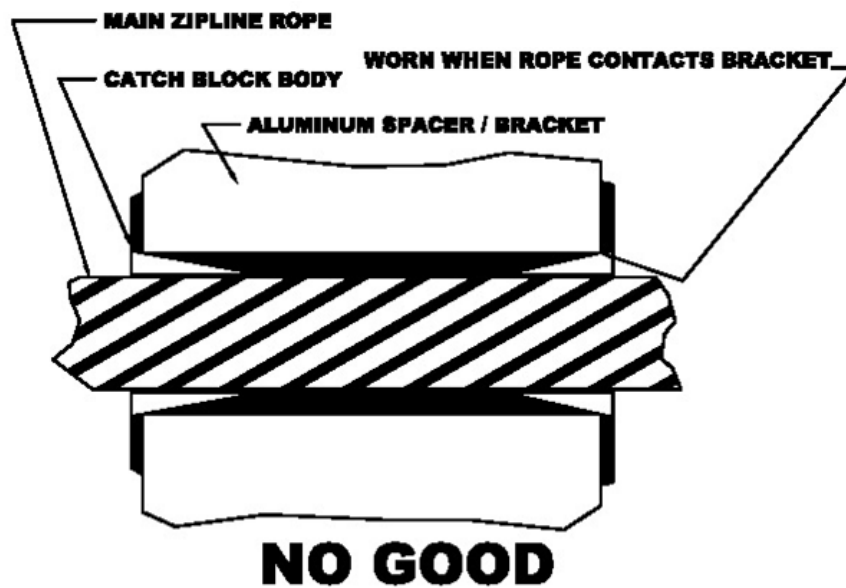
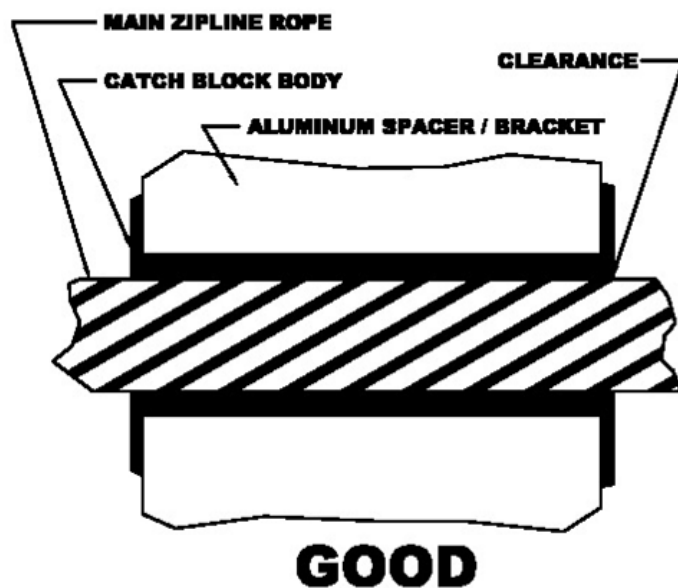
skyTECH Catch Block



Appendix C – Documentation Process Flowchart



Appendix D – Insert Go-NoGo





Skyline Ziplines Ltd.
Headquarters
6-1006 Lynham Road
Whistler, British Columbia
Canada V0N 1B1

Canada Phone: (604) 905 - 4149

admin@skylineziplines.ca
www.skylineziplines.ca